

26
riva



Imagine Your Lago Maggiore Lifestyle

Imagine waking each morning to the shimmering expanse of Lago Maggiore, where the first rays of sunlight dance across the water and the Swiss Alps rise majestically in the distance.

Welcome to Residenza Riva in Minusio—a sanctuary of contemporary elegance and serene luxury, perfectly positioned in one of Ticino's most exclusive lakeside settings.



Set For Completion In Autumn 2027

This exclusive development redefines sophisticated living with just nine meticulously crafted apartments, each designed for those who expect the extraordinary.

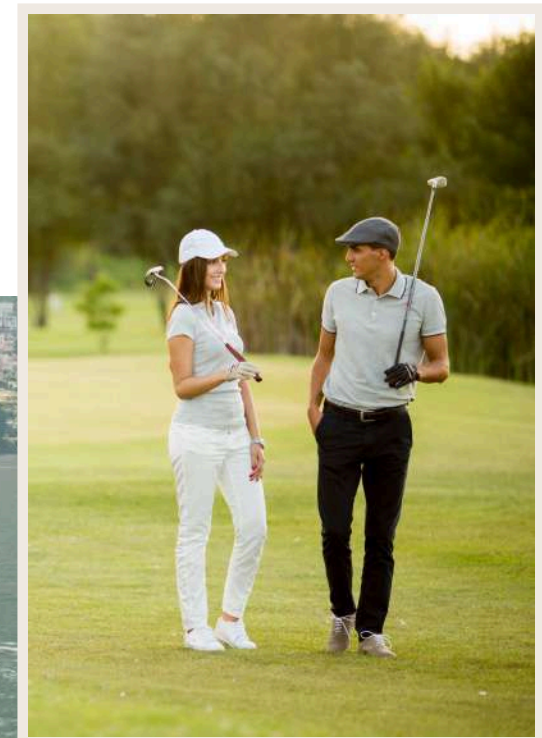
Each apartment is a showcase of modern architecture, with floor-to-ceiling windows framing panoramic views and interiors bathed in natural light.



Refined materials, clean lines, and smart technology create an atmosphere of effortless sophistication and comfort. Step inside your private haven to find open-plan living spaces, designer kitchens, and tranquil bedrooms with ensuite bathrooms. Select apartments feature expansive terraces or private gardens—perfect for alfresco dining or simply soaking in the breathtaking scenery.

Residenza Riva is more than a residence—it's a way of life. Savor leisurely lakeside strolls, immerse yourself in the vibrant culture of nearby Locarno, and enjoy effortless access to exclusive boutiques, gourmet markets, world-class restaurants, and prestigious golf courses.

This is a rare opportunity to secure a residence that balances tranquility with accessibility, privacy with panoramic vistas, and timeless design with cutting-edge innovation. For those seeking the ultimate expression of lakeside luxury in Switzerland, Residenza Riva in Minusio is the address that truly has it all.



Contemporary Sophistication Meets Natural Beauty

The architectural vision of Residenza Riva is one of understated elegance and contemporary sophistication. Clean lines and a refined use of concrete are complemented by sleek aluminum-framed windows, allowing for expansive glass walls that blur the boundary between indoors and out. This modern aesthetic not only creates a striking visual statement, but also ensures every residence is bathed in natural light and graced with uninterrupted, cinematic views of Lago Maggiore.

Luxury extends seamlessly to the outdoors. Ground floor residences enjoy the exclusivity of private landscaped gardens—perfect for tranquil mornings or elegant soirées—while all apartments boast generous terraces designed for alfresco living. Here, you can unwind in the embrace of Ticino's Mediterranean climate, surrounded by lush greenery and the sparkling blue of the lake. Every detail, from the architecture to the outdoor spaces, is crafted to elevate daily life into an experience of timeless beauty and effortless sophistication.





Living In Harmony With Nature

Due to the ecological concept of the building, which includes a geothermal heating system as well as solar panels, the supply of heat is distributed evenly via floor coiling.

This sustainable approach ensures energy efficiency while providing optimal comfort throughout the seasons.

Customization

For early buyers, Residenza Riva offers an exclusive opportunity to personalize your home to the highest standards of luxury living.

You have the privilege to individually modify and customize your apartment, allowing you to craft a residence that is a true reflection of your personal taste and lifestyle.

Whether you wish to reimagine the flow of your living spaces, select bespoke materials, or tailor the ambiance to your unique preferences, our team will work closely with you to ensure every detail meets your expectations.

An architectural rendering of a modern, multi-story residential building. The building features a clean, minimalist design with large glass windows and balconies. In the foreground, there is a well-maintained courtyard with a swimming pool, a large tree, and outdoor seating areas with a table and chairs. The background shows a hilly landscape under a clear sky.

Gallery

The property features stunning views and elegant design elements including:
South-West, Front, and South-East sectional views.





*A Serene Arrival Through The Residence's
Northern Promenade*



*A Private Garden Sanctuary With
Panoramic Lake Views*

*Bespoke Kitchens Crafted For Modern
Elegance*



*Enchanting Outlooks Across The Lake
And Mountains*







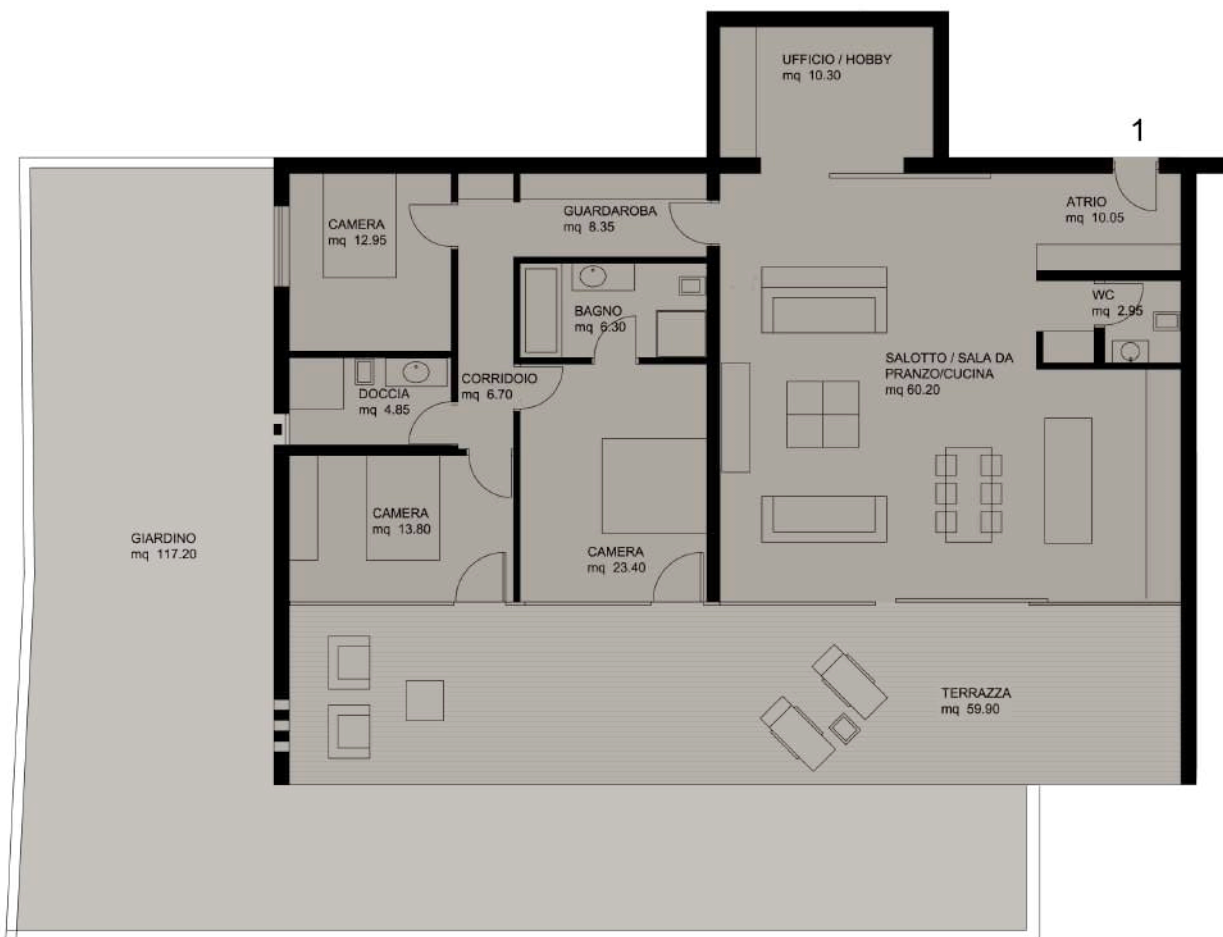




A modern dining room with a wooden table, white chairs, and circular pendant lights. The room features a large window, a decorative wall panel, and a sideboard with candles and framed art.

Nine Exclusive Residences, Infinite Possibilities


The residence comprises just nine exclusive apartments, each thoughtfully designed with a unique layout to offer an unparalleled luxury lifestyle.




Ground Floor: GARDEN LEVEL LUXURY


Unit 1

4½-room apartment

 Gross living space
160 m²

 Terrace
59.90 m²

 Private garden
117.20 m²

 Weighted surface
207.05 m²





Ground Floor: GARDEN LEVEL LUXURY


Unit 2

4½-room apartment

 Gross living space
164.05 m²

 Terrace
59.90 m²

 Private garden
114.60 m²

 Weighted surface
210.86 m²





First Floor: *ELEVATED PERSPECTIVES*


Unit 3

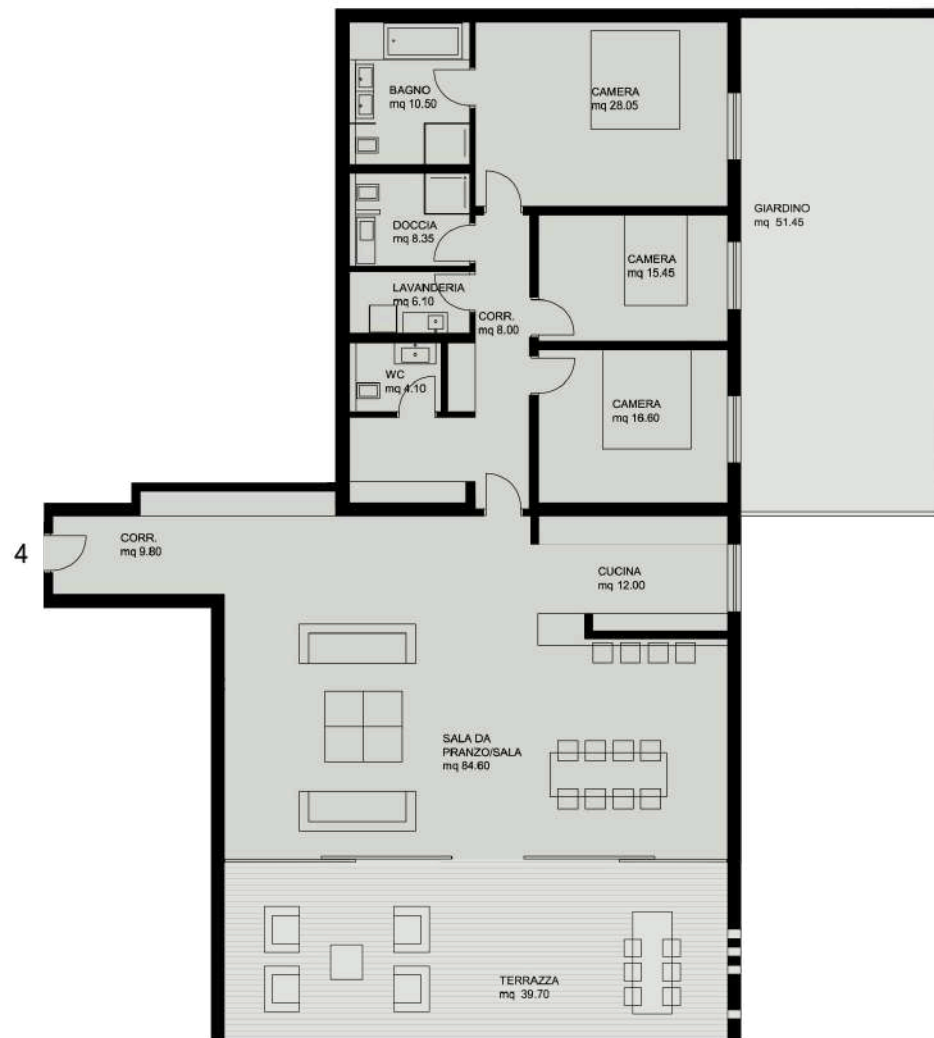
4½-room apartment

 Gross living space
219.30 m²

 Terrace
39.70 m²

 Private garden
54.70 m²

 Weighted surface
248.55 m²





First Floor: *ELEVATED PERSPECTIVES*


Unit 4

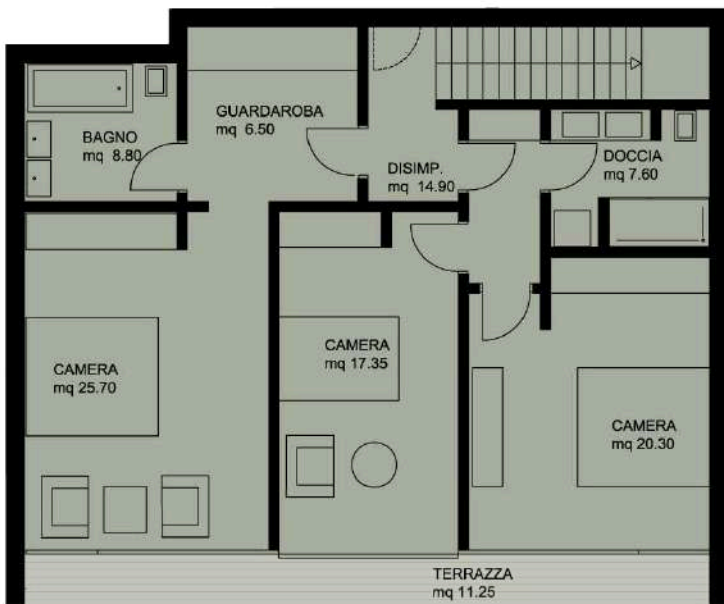
4½-room apartment

 Gross living space
208.75 m²

 Terrace
39.70 m²

 Private garden
51.45 m²

 Weighted surface
236.91 m²



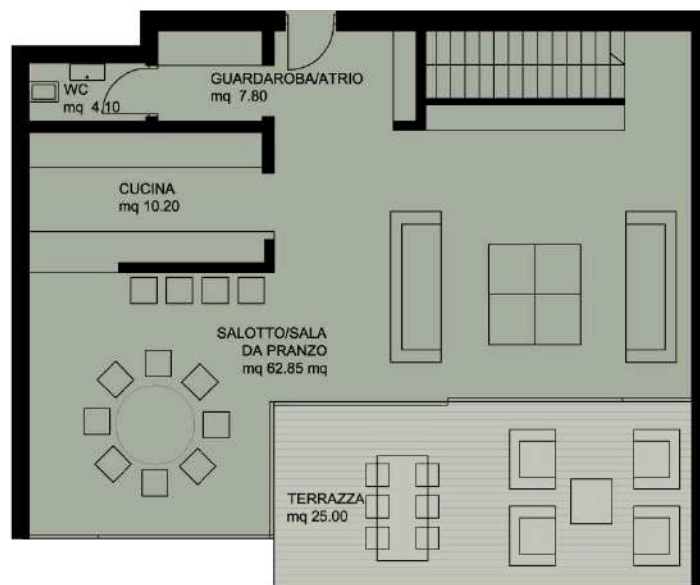
Floor 1

First Floor:
DUPLEX SOPHISTICATION

Unit 5


4½-room duplex apartment,
entrance on the second floor


5



Floor 2

 Gross living space
186.10 m²

 Terrace
36.25 m²

 Weighted surface
207.50 m²





Second Floor: *PANORAMIC LUXURY*

Unit 6

4½-room apartment

 Gross living space
219.30 m²

 Terrace
39.70 m²

 Weighted surface
243.15 m²





Second Floor: PANORAMIC LUXURY

Unit 7

4½-room apartment

 Gross living space
220.05 m²

 Terrace
39.70 m²

 Weighted surface
243.98 m²



Third Floor: PENTHOUSE EXCLUSIVITY

Unit 8

4½-room apartment



Gross living space
208.50 m²



Terrace
49.10 m²



Open terrace
61.25 m²



Weighted surface
258.05 m²



Third Floor: PENTHOUSE EXCLUSIVITY


Unit 9

4½-room apartment

 Gross living space
212.95 m²

 Terrace
49.10 m²

 Open terrace
61.25 m²

 Weighted surface
261.83 m²



Uncompromising Quality In Every Detail

All apartments include:

- Large floor-to-ceiling windows
- Private terraces with lake views
- High-quality materials and finishes
- Environmentally friendly geothermal heating
- Solar panel installation for sustainable energy
- Customizable interior layouts and finishes
- Modern building technology for maximum comfort



Private Storage Cellars

Your Personal Storage &
Wine Cellar Potential



10 individual cellars
Each approximately 11 m²

A group of four people are riding bicycles on a paved path. They are wearing helmets and casual cycling attire. The path is bordered by a low green hedge on the right. In the background, there are several tall palm trees and a large, hazy mountain range under a clear sky. A body of water is visible in the distance between the palm trees.

*Life In Minusio: Timeless
Elegance On Lago Maggiore*



Discover Switzerland's Slice Of La Dolce Vita...

Nestled along the sun-drenched shores of Lake Maggiore, Minusio offers an exquisite fusion of natural splendor and refined tranquility. This enchanting lakeside village is embraced by gently rolling hills and the majestic peaks of the Swiss Alps, where the sparkling blue waters meet lush greenery to create a truly captivating panorama. Minusio's peaceful ambiance, with its elegant promenades and historic villas, imbues the area with a timeless allure.

Whether you are searching for a serene lakeside retreat or a sophisticated base to discover the wonders of Switzerland and nearby Northern Italy, Minusio promises an unrivaled lifestyle where nature and elegance exist in perfect harmony. The village's unique combination of calm and connectivity makes it the ideal home for those who cherish both relaxation and adventure.

Quiet Elegance & Cultural Sophistication

With effortless access to vibrant Locarno, the cultural heart of Ticino, and the Italian border just a short drive away, you're always close to world-class dining, exclusive shopping, and a rich tapestry of cultural experiences. Minusio's tranquil setting, enhanced by its storied past and modern comforts, makes it a coveted destination for those who desire the best of both worlds—unspoiled natural beauty and sophisticated living.





Premier Lifestyle & Leisure

Residenza Riva is situated in the desirable area of Minusio with easy access to:

- Local Infrastructure: Walking distance to schools, gourmet markets, and public transit
- The picturesque shores of Lago Maggiore
- Cardada Cimetta scenic viewpoint
- Historic Piazza Grande in Locarno
- Locarno Film Festival venue
- Lungolago promenade in Ascona
- Scenic Ponte Lavertezzo
- Lido Locarno recreational area
- Prestigious Ascona Golf Club— exclusive 18-hole course renowned for its elegance and exceptional setting



Welcome To Minusio, Your Gateway To Refined Lakeside Living.

ARRIVAL BY CAR












- 3 min → Locarno train station
- 15 min → Lugano
- 30 min → Como
- 80 min → Milano
- 90 min → Milano Malpensa Airport
- 90 min → Milano Linate Airport
- 110 min → Bergamo
- 145 min → Zurich Airport

ARRIVAL BY TRAIN

- 30 min → Lugano
- 70 min → Como
- 115 min → Milano
- 135 min → Milano Malpensa Airport
- 175 min → Milano Linate Airport
- 200 min → Milano Bergamo Airport
- 170 min → Zurich Airport





- 
Lungolago Lakeside promenade
 5 min by walk
- 
Fine dining restaurant “Giardino Lago”
 15 min by walk
- 
Supermarket in Minusio “Coop”
 6 min by walk
- 
Minusio train station
 12 min by walk
- 
Villa San Quirico
 3 min by walk
- 
Locarno train station
 3 min by car
- 
Locarno Piazza Grande
 8 min by car
- 
Santuario della madonna del Sasso
 6 min by car
- 
School Rudolf Steiner
 6 min by walk
- 
Equestrian center Scuderia Isola Martella
 15 min by car
- 
Golf Club Patriziale Ascona
 15 min by car

Contact Information

Request Information About Apartments:

Please visit our website
<https://residenza-riva.ch>

For detailed floor plans and additional
information on available units please contact us
at info@rivaventisei.ch

Prices upon request

Rivaventisei SA

Piazza stazione 4
6600 Muralto
Switzerland
info@rivaventisei.ch

Studio D'Architettura Archinter SA

Piazza Stazione 4
6600 Muralto
Switzerland
<https://archinter.ch/>